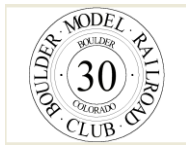


Boulder Model Railroad Club Clinic
DCC A-Z
Connecting your DCC system to
Windows XP/7 and JMRI
Technical tips

Joe Baldwin

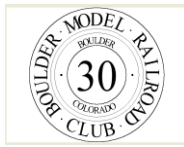
303.665.1199

<http://www.joe-daddy.com>



Contents

Establishing DCC to Computer Connectivity	3
Understanding Windows 7 Com Ports (Similar in XP & Vista)	3
NCE.....	3
Serial to USB adapter	3
Managing the Drivers.....	6
Windows Device manager	6
The Device Manager Expanded (Similar in XP & Vista).....	8
USB (Universal Serial Bus controllers)	9



Establishing DCC to Computer Connectivity



Understanding Windows 7 Com Ports (Similar in XP & Vista)

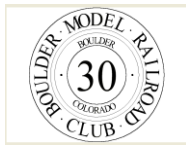
DCC systems communicate with Personal Computers using either the Serial or USB ports. These ports are similar in function, but different in their physical appearance.



NCE

Serial to USB adapter



Required if you have NCE or Lenz LI101F and your PC has no serial port. USB port(s) are required.

http://www.belkin.com	http://www.digi.com
Belkin	Edgeport USB to Serial Adapter
	
Windows® 98, 98 SE, 2000, Me, XP	Windows XP , Windows Vista , Windows Server 2003, Windows Server 2008 and Windows 7
<p>So far as I can tell, the Drivers for Vista and Windows 7 are not available. I had one and could not make it work on Windows 7.</p> <p>Make sure you get the CD that has the drivers. Install the drivers from the CD BEFORE you plug the device in.</p>	<p>Preferred with Windows 7, it will typically automatically download the drivers from the Internet whenever you plug it in. Make sure you have internet connectivity before you connect this to your PC.</p>



NCE Power CAB ONLY	Digitrax
http://www.ncedcc.com	http://www.digi.com
NCE Power CAB USB	Digitrax PR3
	
<p>Windows XP/Server 2003/Vista/7 MAC & Linux</p>	<ul style="list-style-type: none"> • Windows XP, Vista and 2000. • Runs on Mac OS 10.4/10.5
<p>Make sure you get the driver directly from the NCE website. Install the drivers from the CD BEFORE you plug the device in.</p>	<p>The PR3 lets SoundFX users download new Project sound files and even reflash the sound decoder's firmware for latest updates. The PR3 is different from the PR2 in that it offers a USB 2.0 interface, it offers selectable MS100 mode*, and the PR3 is priced lower.</p> <p>* The PR3 also incorporates an MS100 emulation mode providing USB/LocoNet connectivity for third party software such as JMRI, Railroad and Co., and others Install the drivers from the CD BEFORE you plug the device in.</p>

Lenz and Digitrax

LENZ	LENZ
http://www.lenzusa.com	http://www.lenzusa.com
The LI101F Computer Interface	LIUSB Computer Interface
	
Windows® 9x, 2000, ME, and XP	Windows© 2000 or Windows © XP, Vista© 32 and Windows 7 32 & 64 bit
<p>So far as I can tell, the Drivers for Vista and Windows 7 are not available. This unit requires a Serial Port or a serial port to USB adapter to work. Make sure you get the CD that has the drivers. Intsall the drivers from the CD BEFORE you plug the device in.</p>	<p>The Windows 7 32 & 64 bit drivers can be downloaded here: http://www.bahnfan.net/post/64-bit-drivers-for-Lenz-LI-USB-on-Windows-7.aspx These drivers are typically loaded by right clicking on the device in the device manager and selecting update drivers. You will have to tell windows where you saved the files on your hard drive.</p>



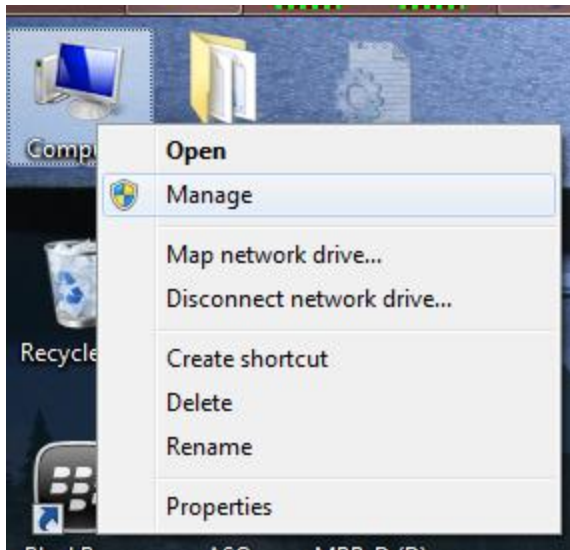
Managing the Drivers

We manage hardware devices (Serial and Com ports are hardware devices) by administering their drivers. To access the device drivers, one uses Device manager which is accessed by:

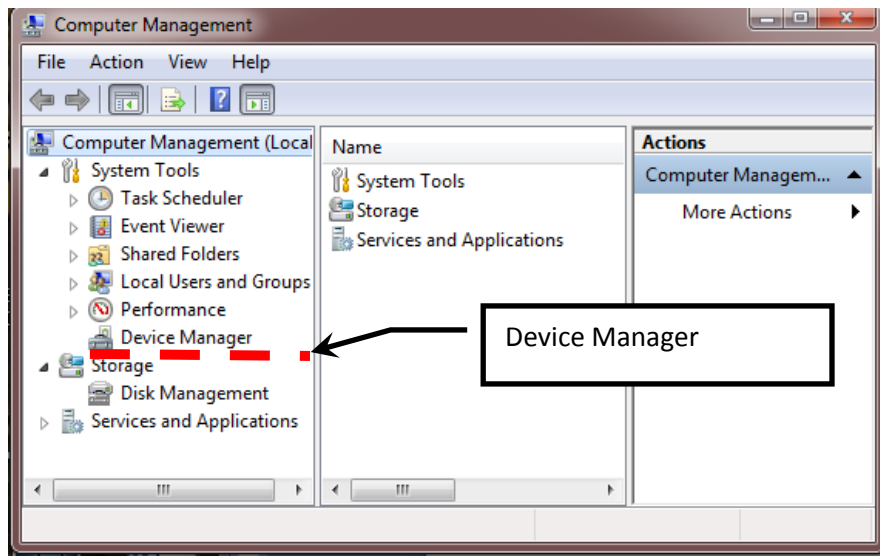
Right click on my computer (usually on the desktop, else access via the start menu and right click on my computer)

From the dropdown list, select manage

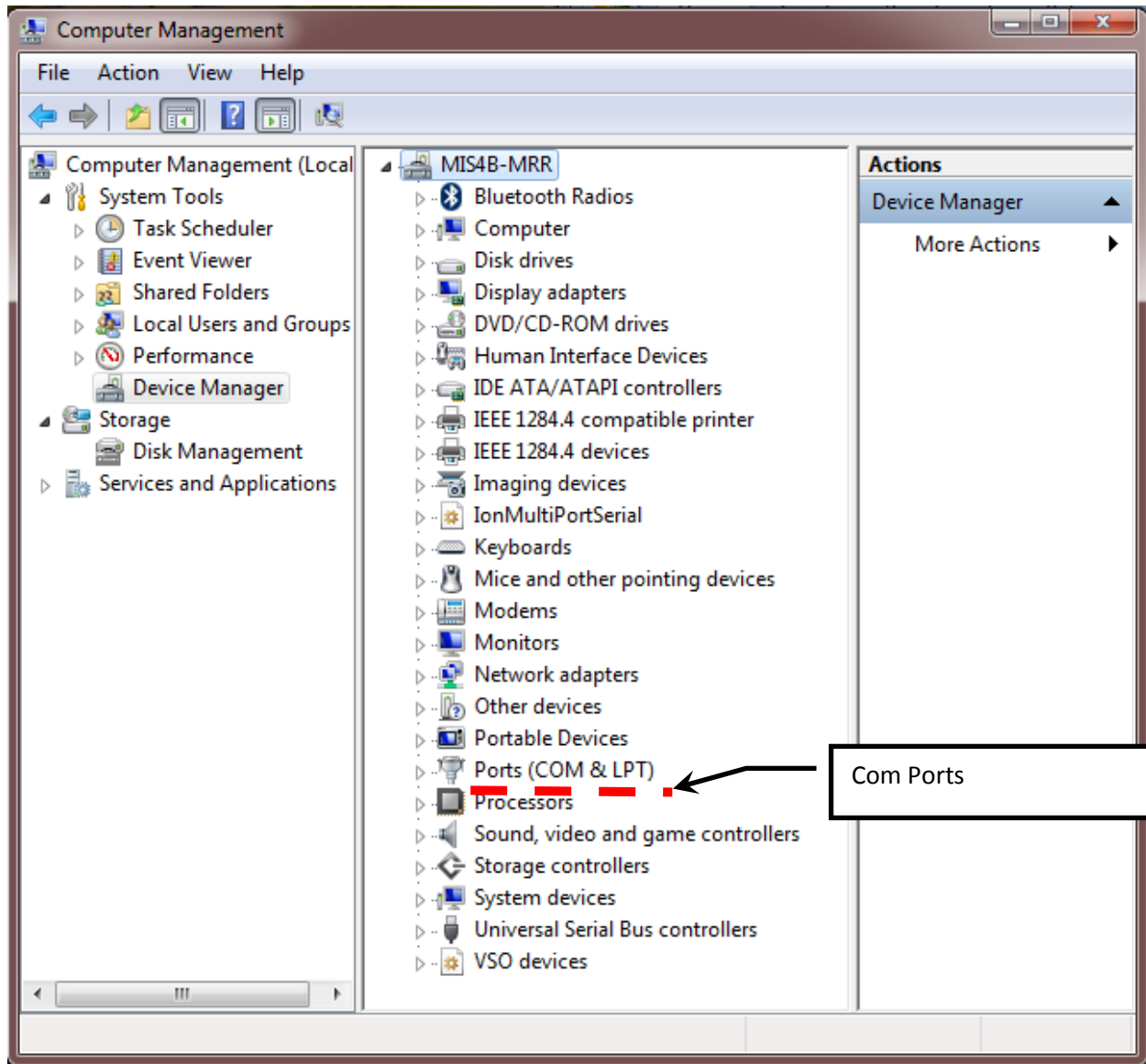
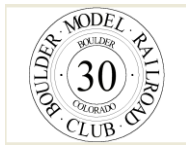
Windows Device manager



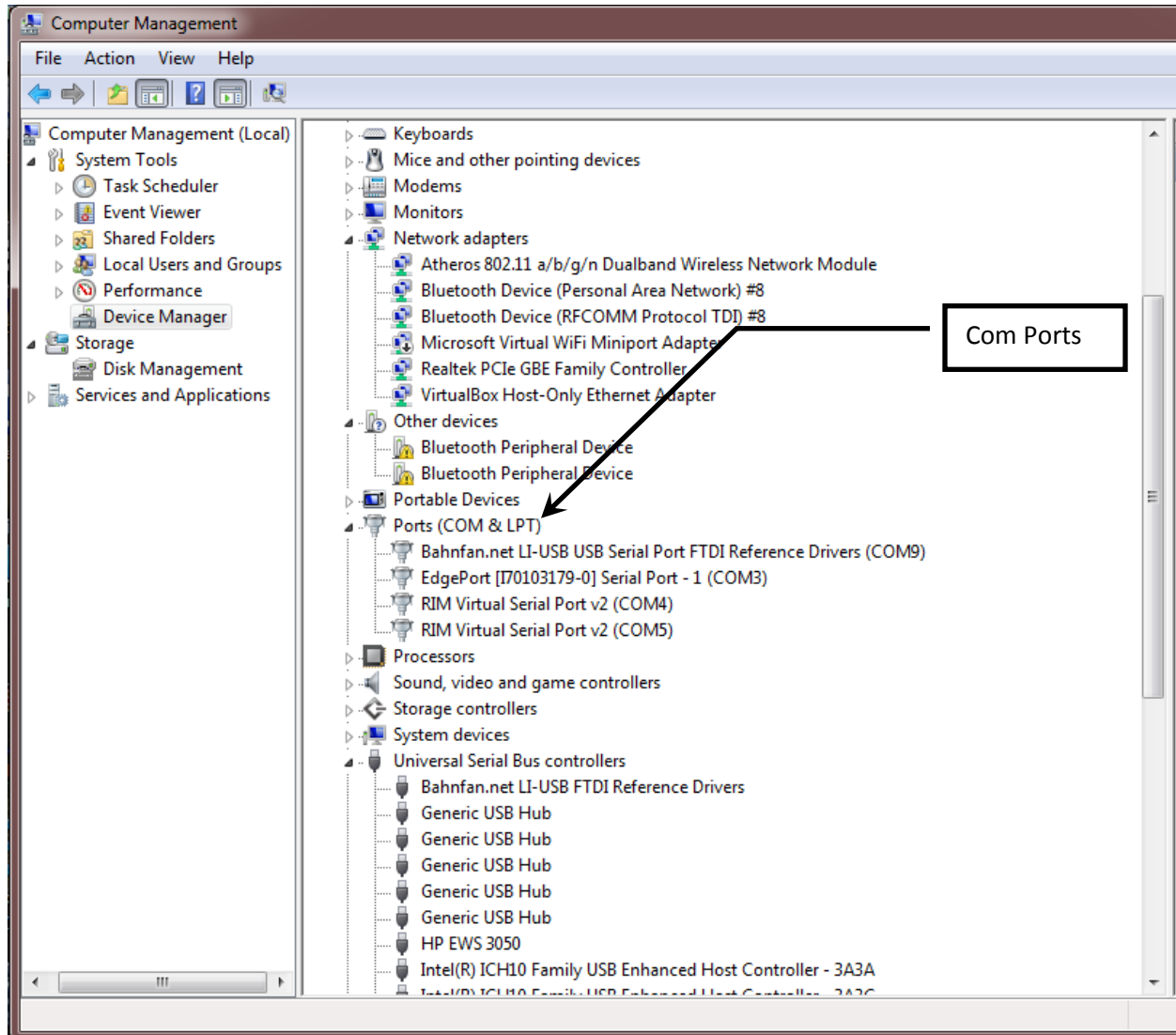
The Management Console will appear on your computer screen.



The Windows 7 Device Manager



The Device Manager Expanded (Similar in XP & Vista)



Com Port Details

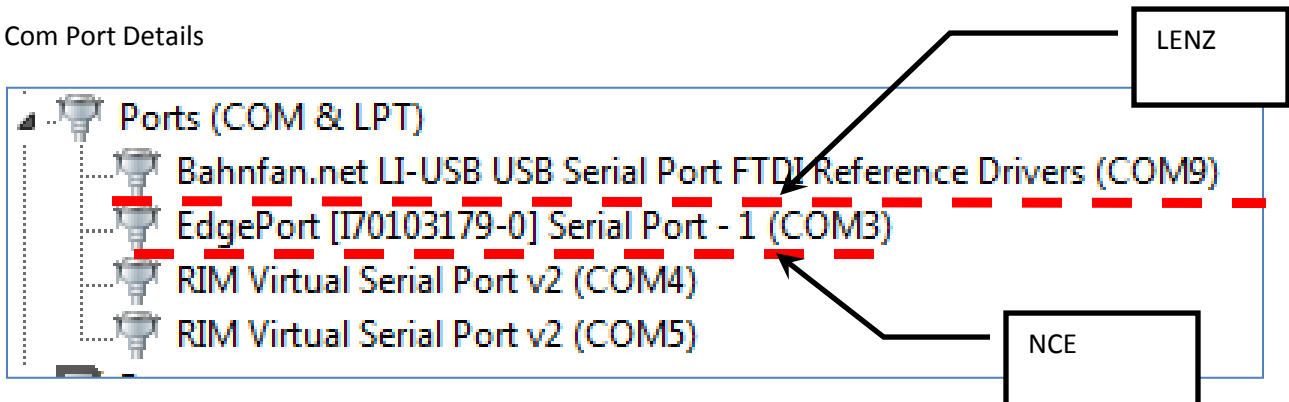
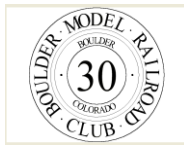
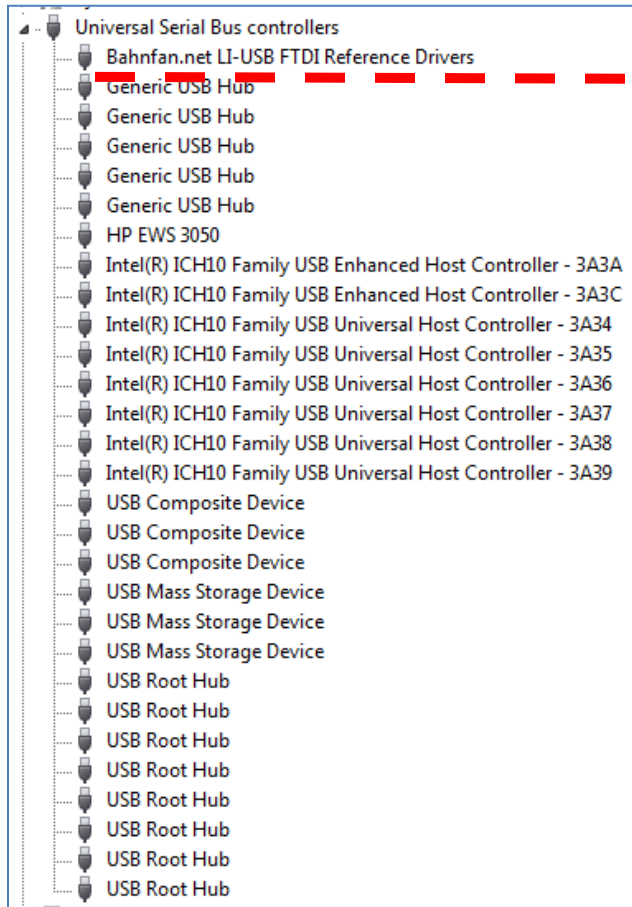


Figure 1 COM Port details



USB (Universal Serial Bus controllers)



Universal Serial Bus controller Details

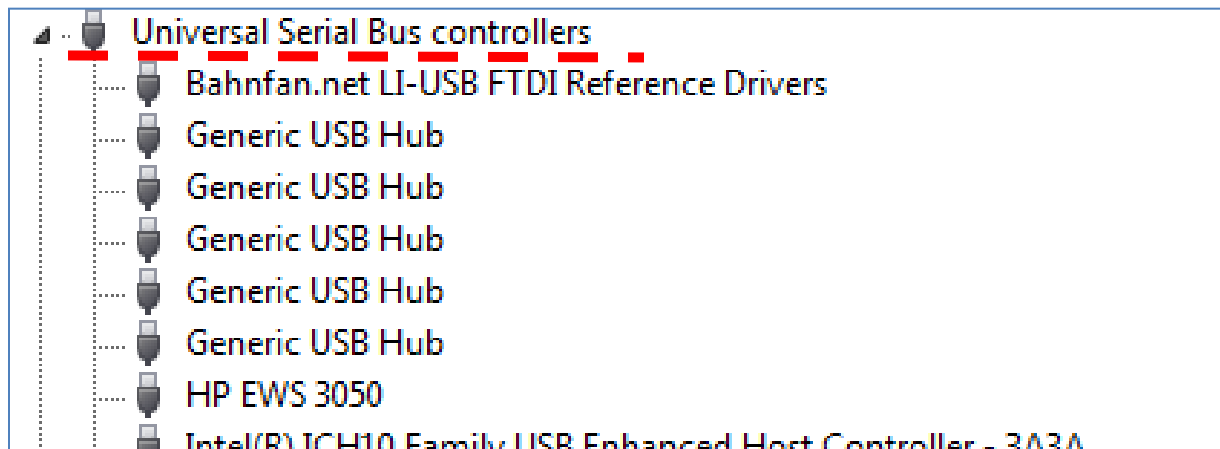


Figure 2 Universal Serial Bus Controllers